



Ersatzteilunterlagen

HIMOTO Firestorm Buggy 4WD

Maßstab 1:8 Bestell-Nr. 650305

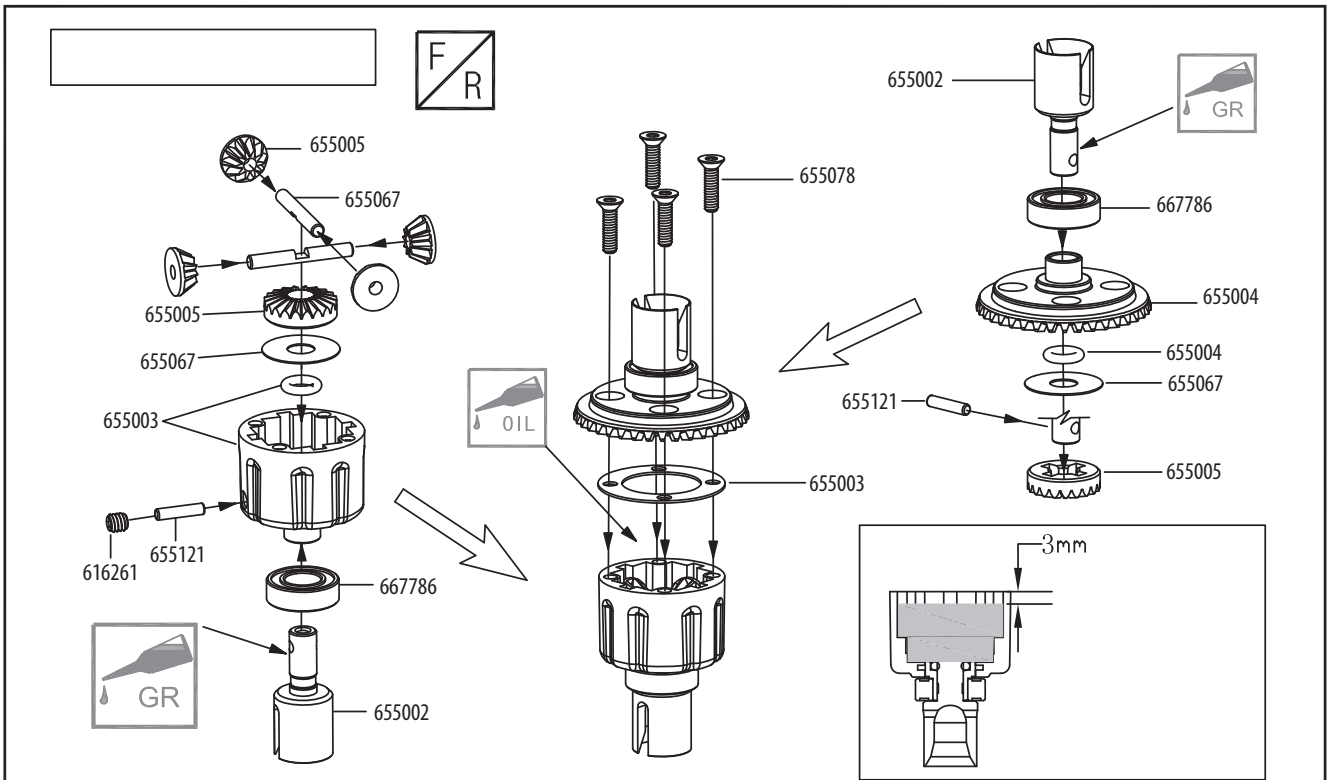


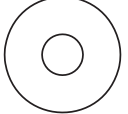

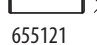



Wichtige Hinweise:

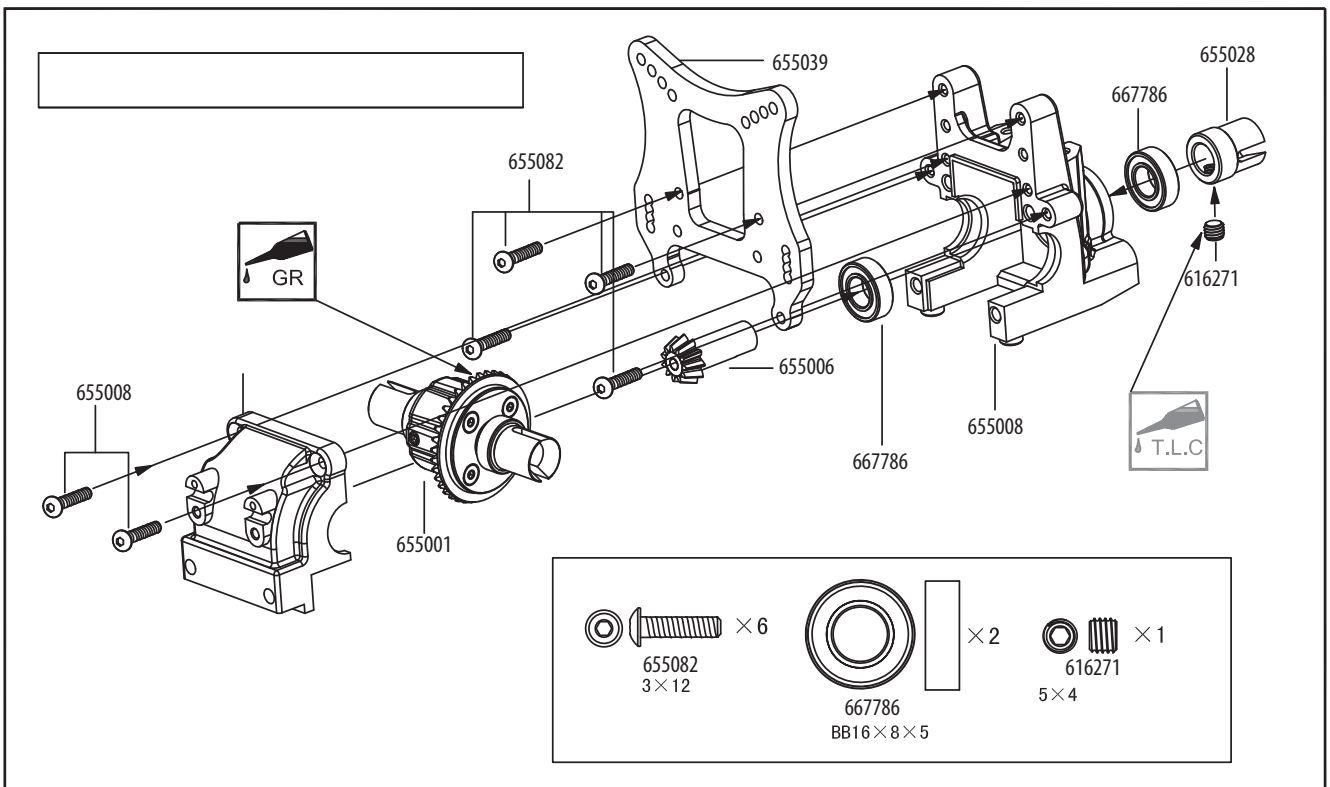
Dieses Produkt ist kein Spielzeug, es ist nicht für Kinder unter 14 Jahren geeignet. Das Modell ist nur für den Betrieb außerhalb geschlossener Räume vorgesehen. Beachten Sie alle Hinweise dieser Bedienungsanleitung. Diese enthält wichtige Informationen über den Umgang mit dem Fahrzeug.




Bei Schäden, die durch Nichtbeachtung dieser Bedienungsanleitung verursacht werden, erlischt die Gewährleistung/Garantie. Für Folgeschäden übernehmen wir keine Haftung! Bei Sach- oder Personenschäden, die durch unsachgemäße Handhabung oder Nichtbeachten der Sicherheitshinweise verursacht werden, übernehmen wir keine Haftung! Von der Gewährleistung und Garantie ausgeschlossen ist ferner normaler Verschleiß beim Betrieb und Unfallschäden.

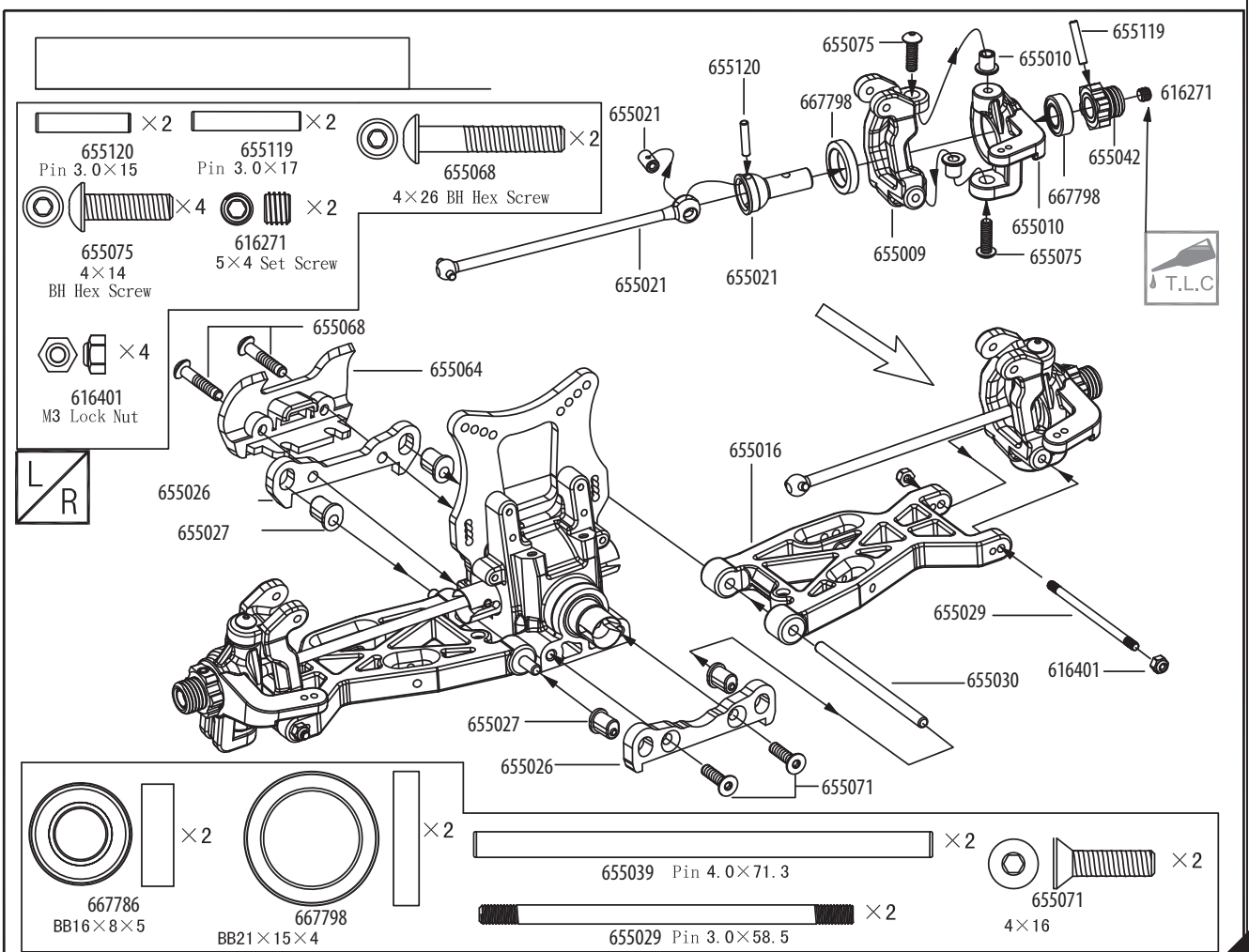
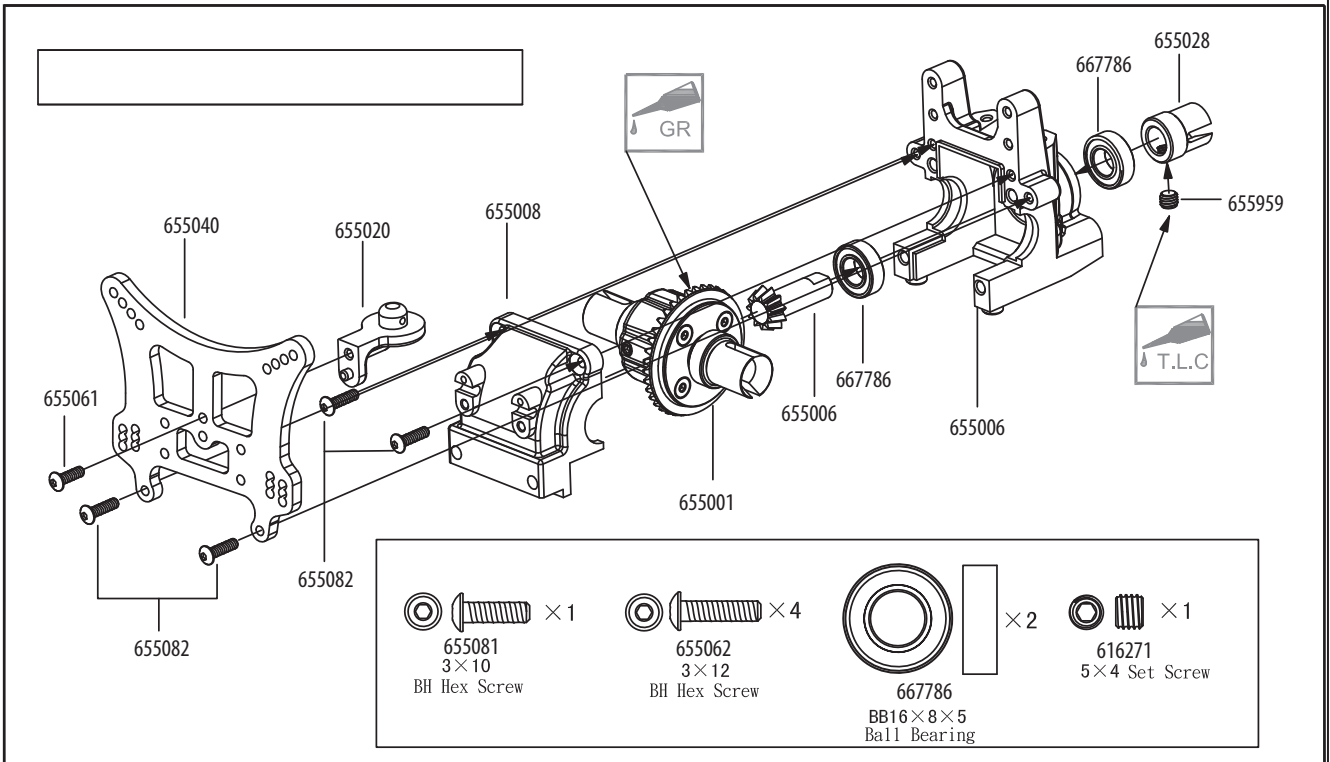
Aufbauabbildungen Firestorm Chassis



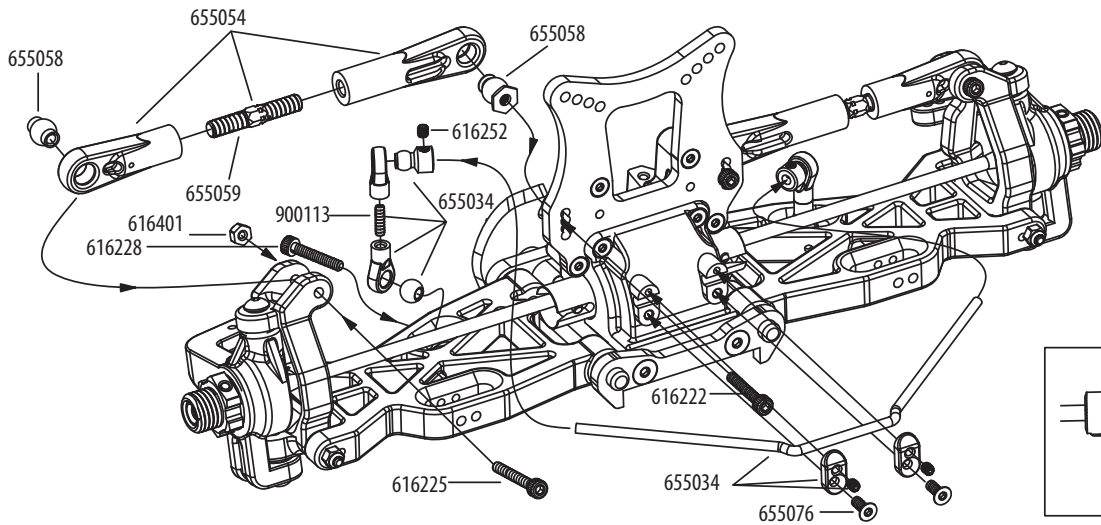
- | | | | | | | | | | |
|---|------------|---|------------|---|------------|---|------------|---|------------|
|  | $\times 2$ |  | $\times 2$ |  | $\times 2$ |  | $\times 4$ |  | $\times 2$ |
| 655067
17x6.3x0.3 | | 667786
BB16x8x5 | | 655121
Pin 2.5x11 | | 655076
3x12 | | 655003
O-ring 1.75x9 | |
| | | | |  | $\times 1$ | | | | |
| | | | | 616261
4x4 | | | | | |

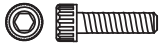
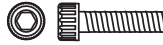







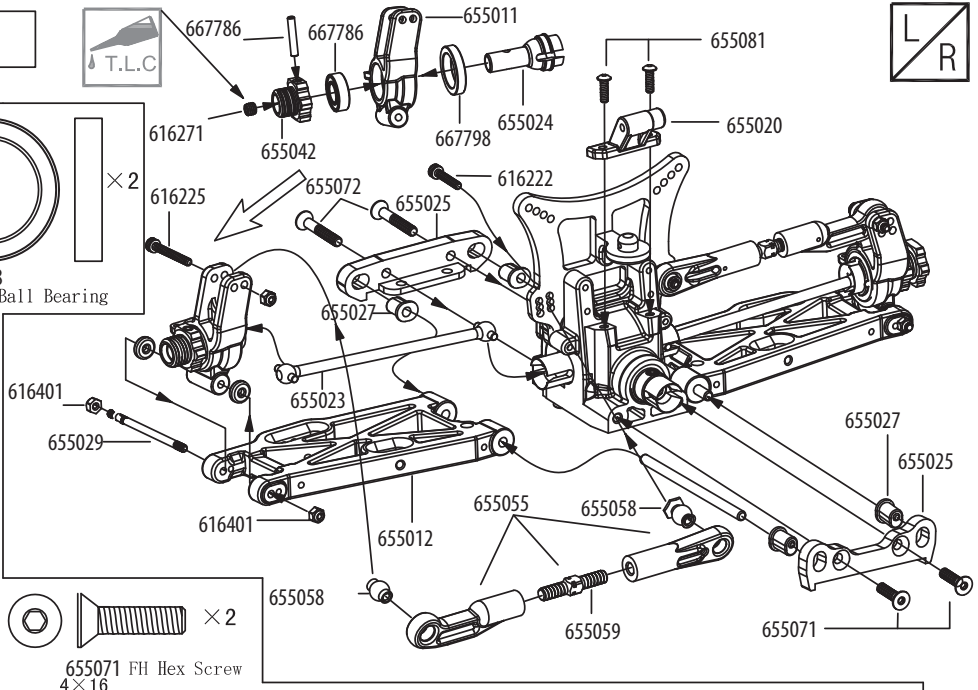
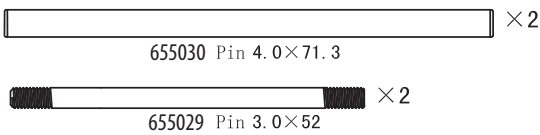
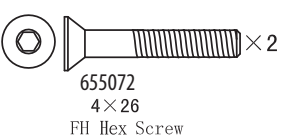
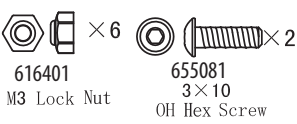
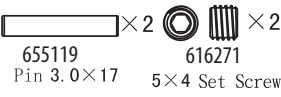
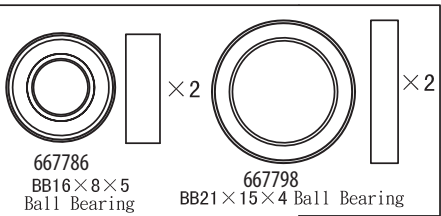
- | | | | | | |
|---|------------|--|------------|---|------------|
|  | $\times 6$ |  | $\times 2$ |  | $\times 1$ |
| 655082
3x12 | | 667786
BB16x8x5 | | 616271
5x4 | |

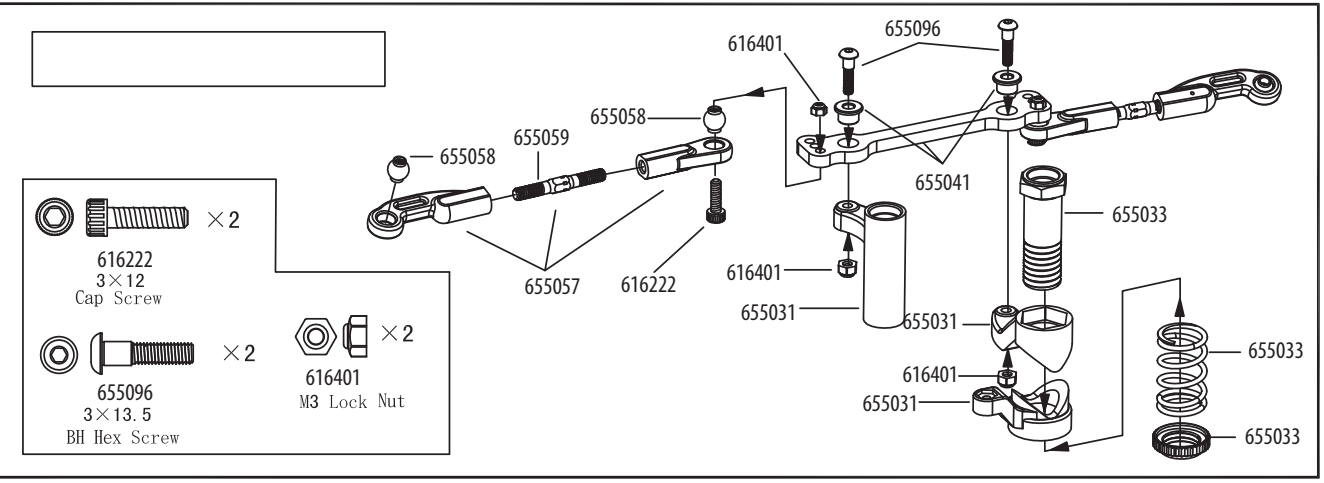
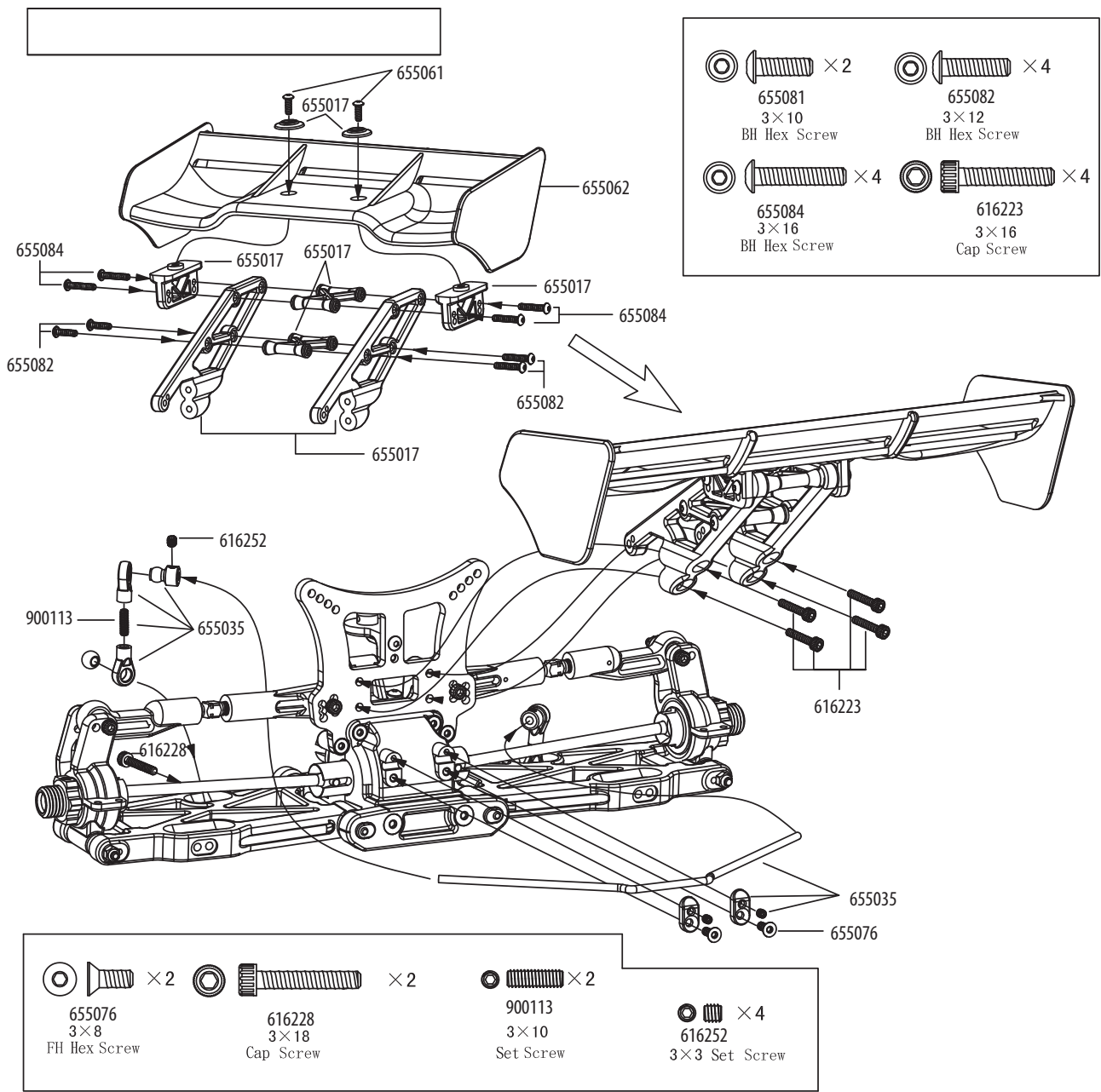


Aufbauabbildungen Firestorm Chassis

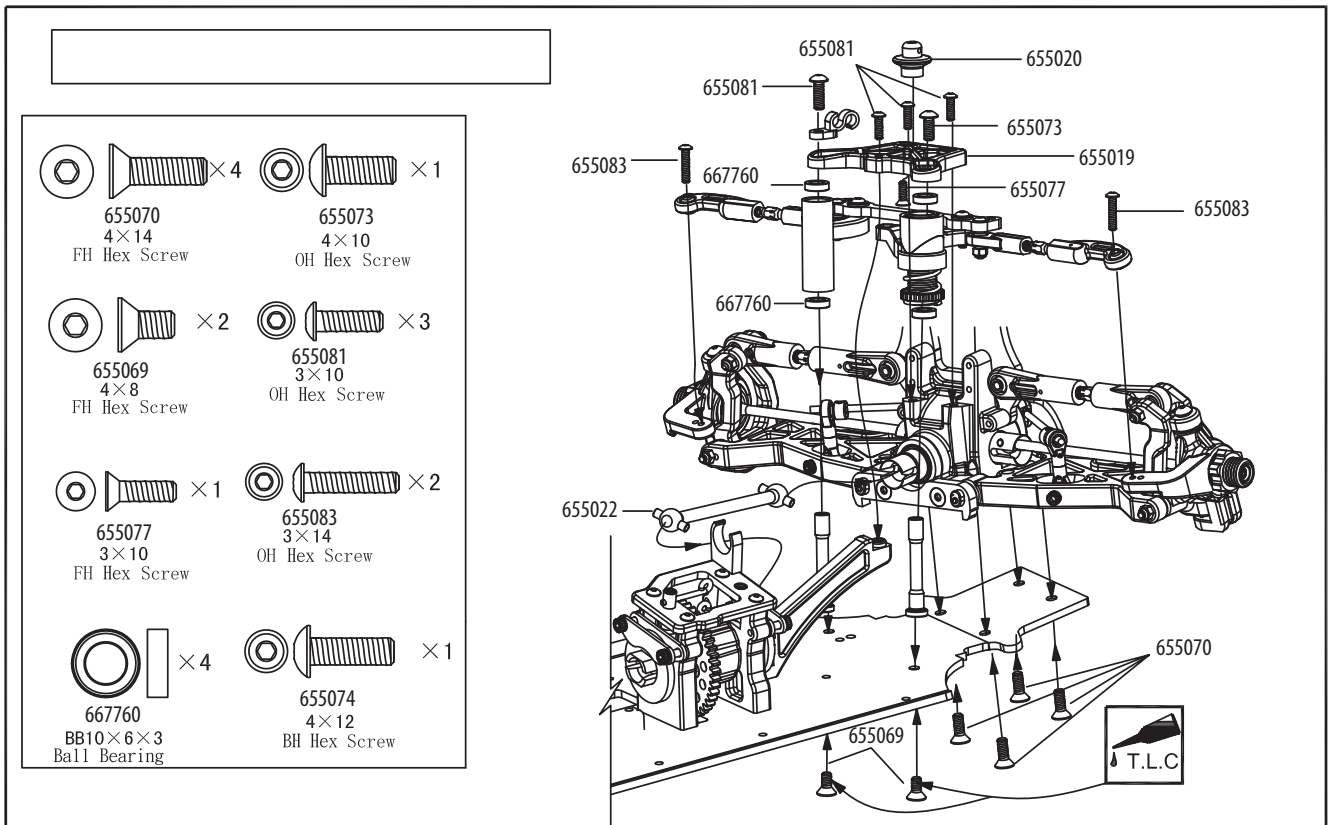
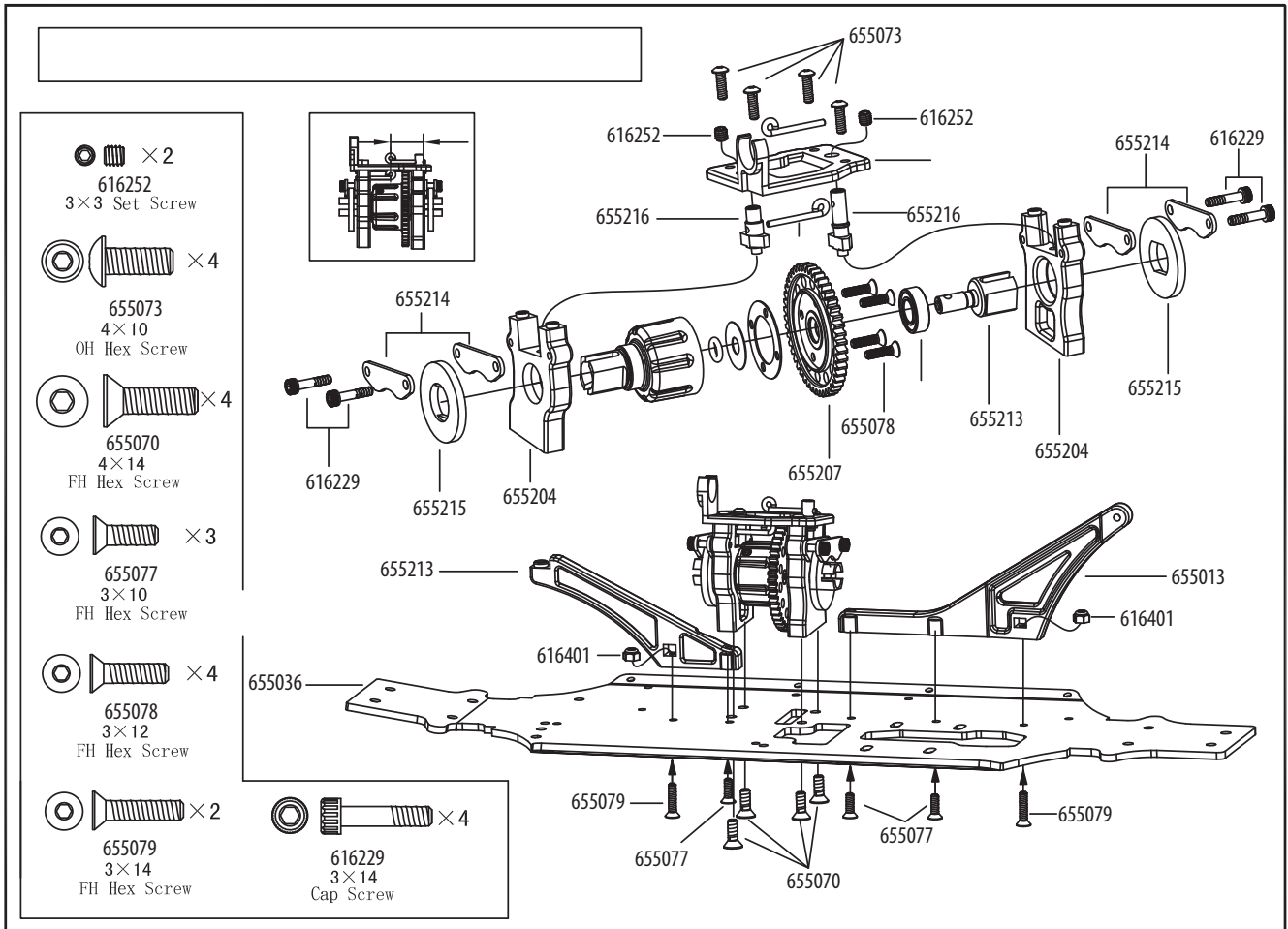


- | | | | | |
|---|--|---|--|---|
|  × 2 |  × 2 |  × 2 |  × 4 |  × 2 |
|  × 2 |  × 2 | | | |

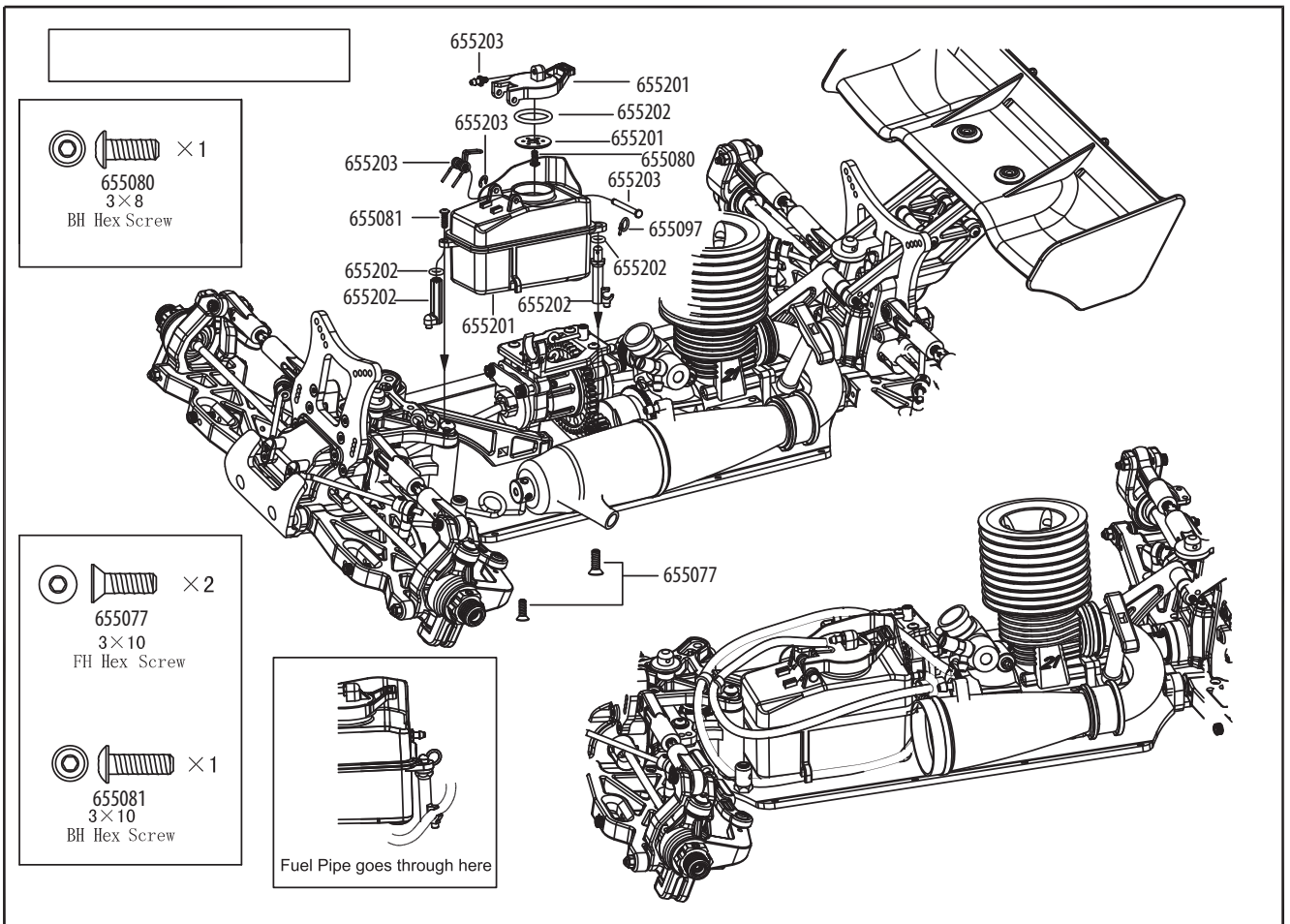
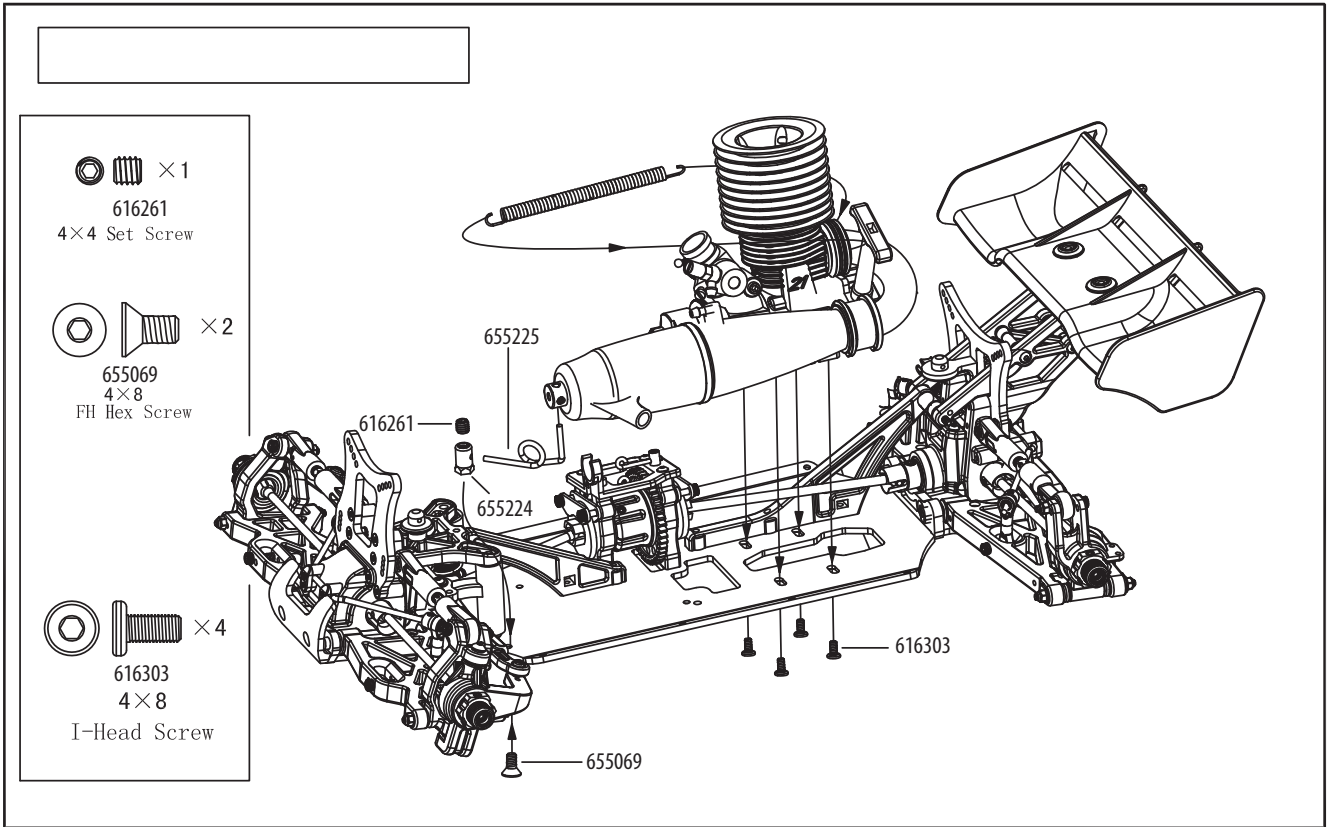




Aufbauabbildungen Firestorm Chassis



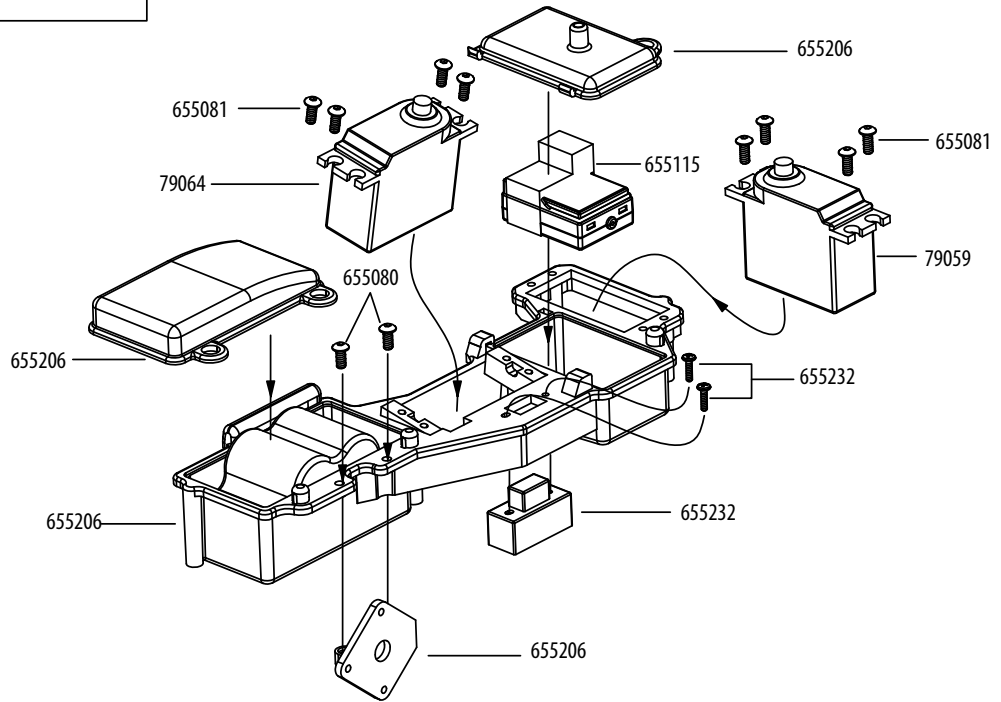
Aufbauabbildungen Firestorm Chassis



 × 8
655081
3 × 10
BH Hex Screw

 × 1
655080
3 × 8
BH Hex Screw

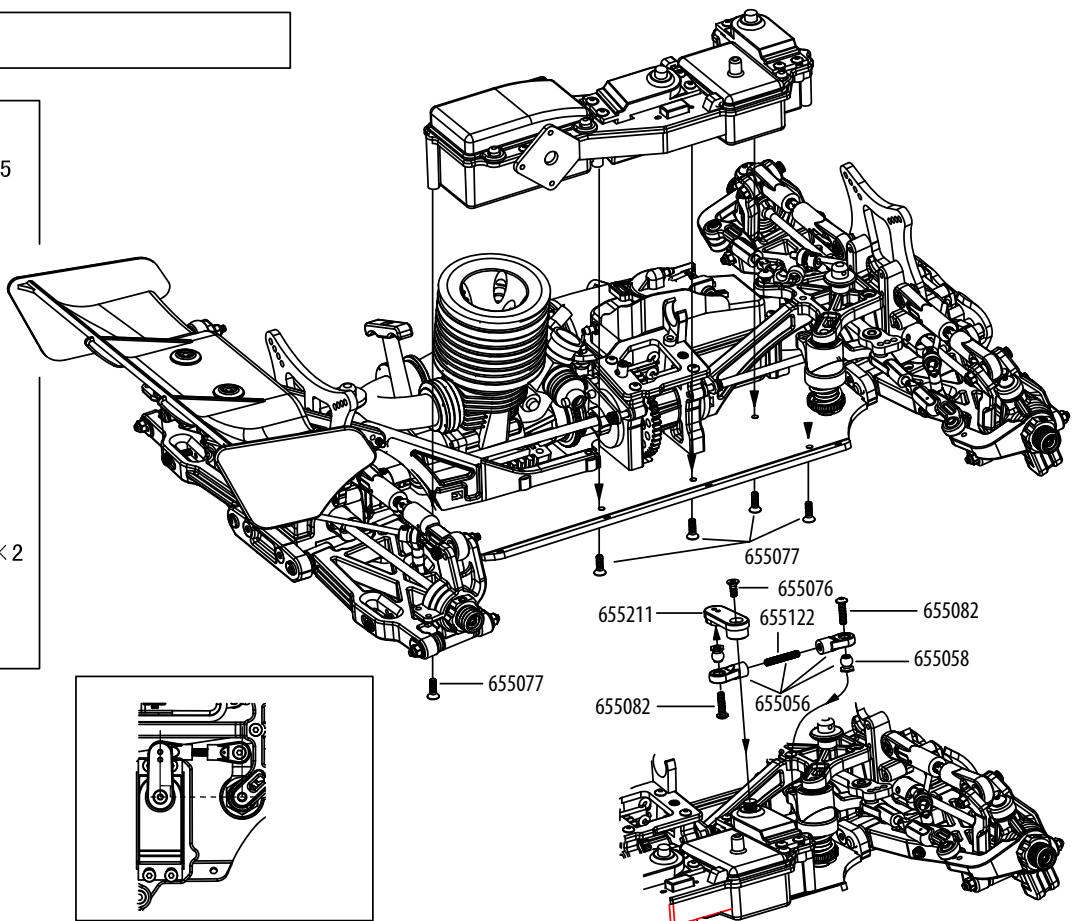
 × 1
655232
2 × 10
Cap Screw



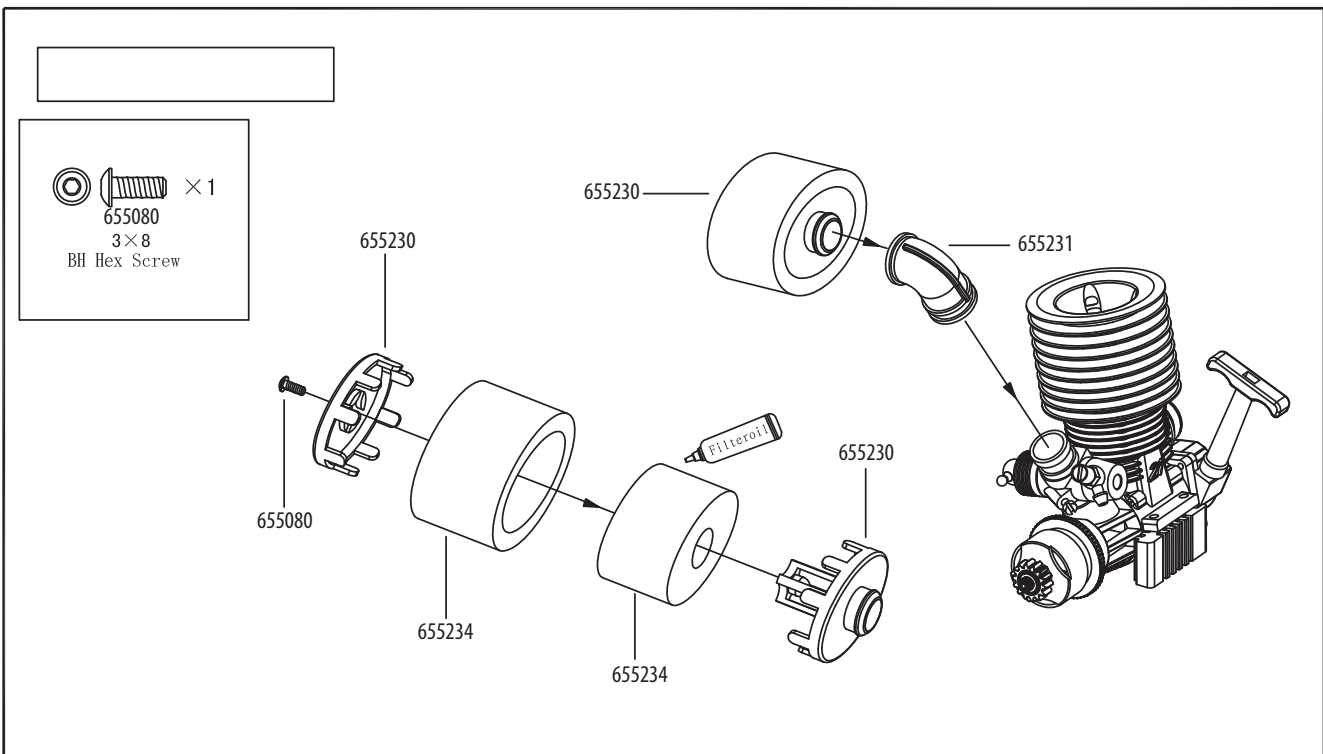
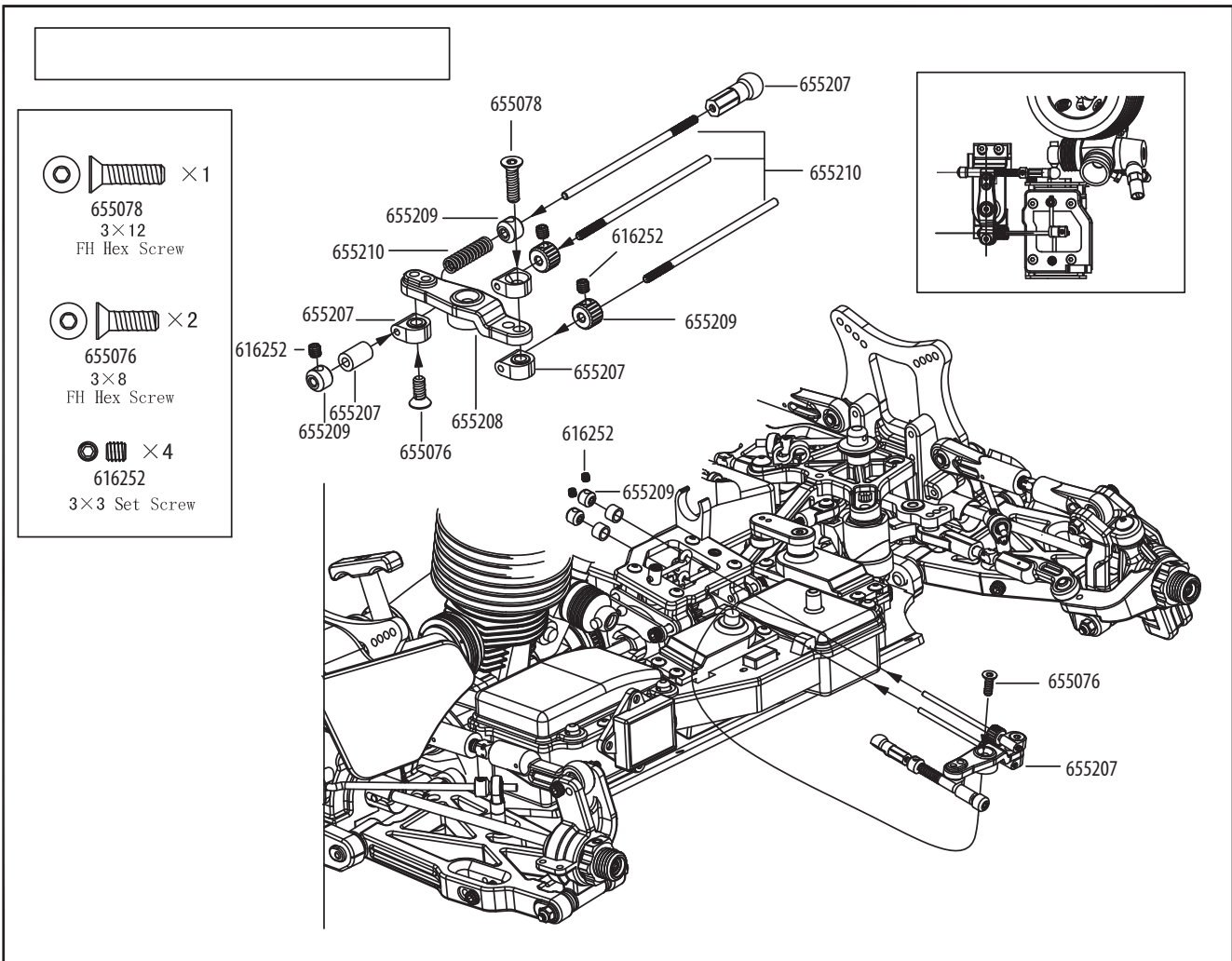
 × 5
655077
3 × 10
FH Hex Screw

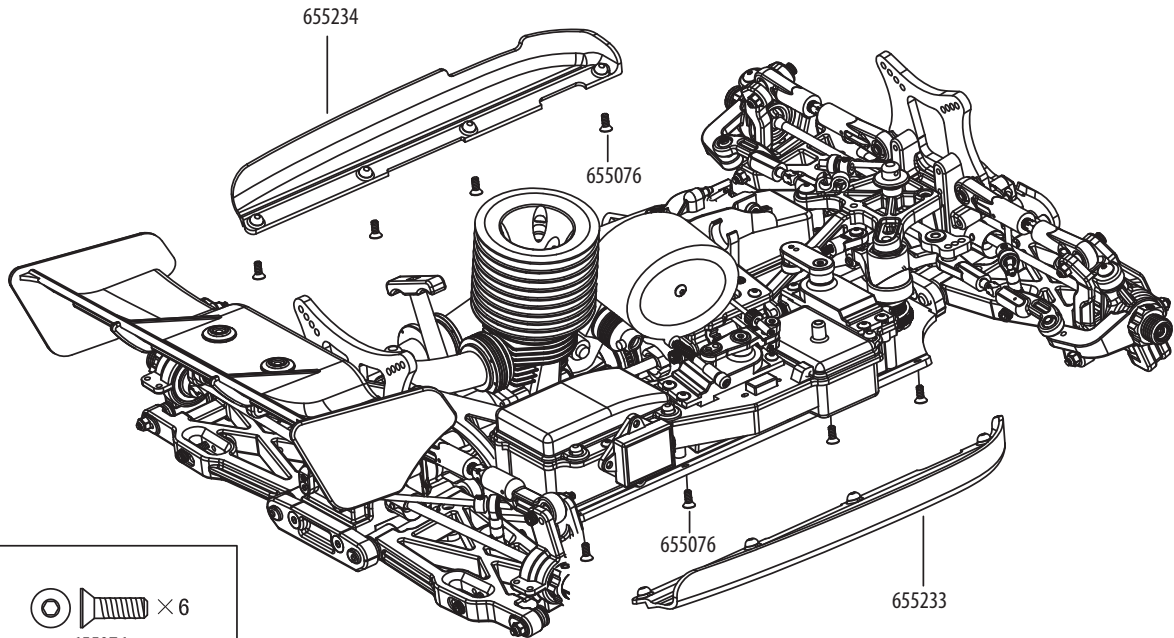
 × 1
655076
3 × 8
FH Hex Screw

 × 2
655082
3 × 12
BH Hex Screw

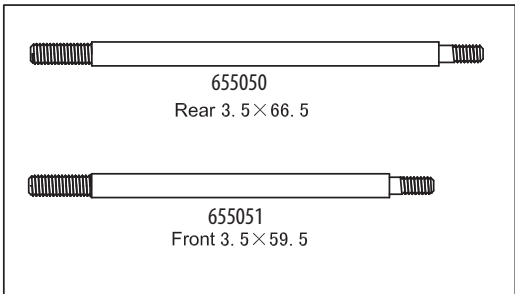
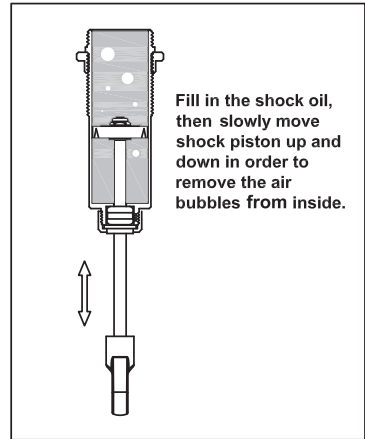
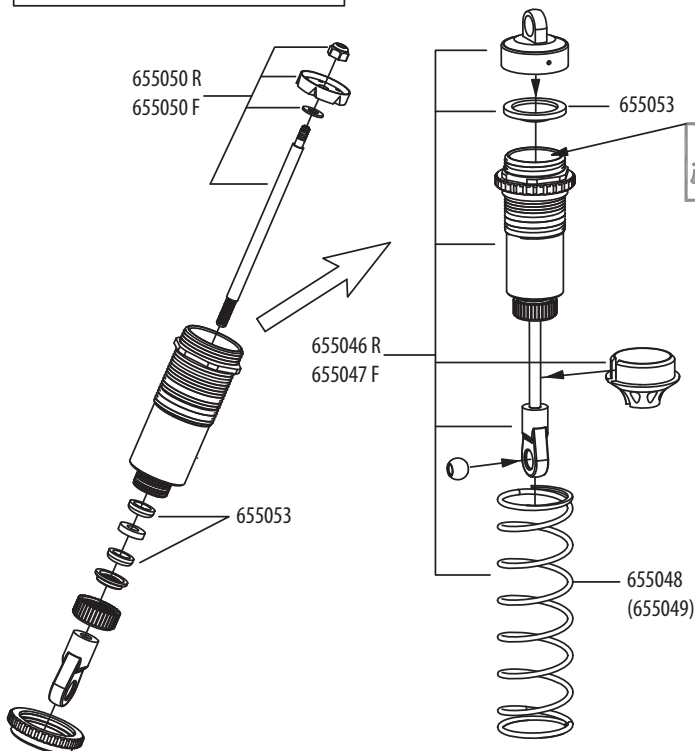


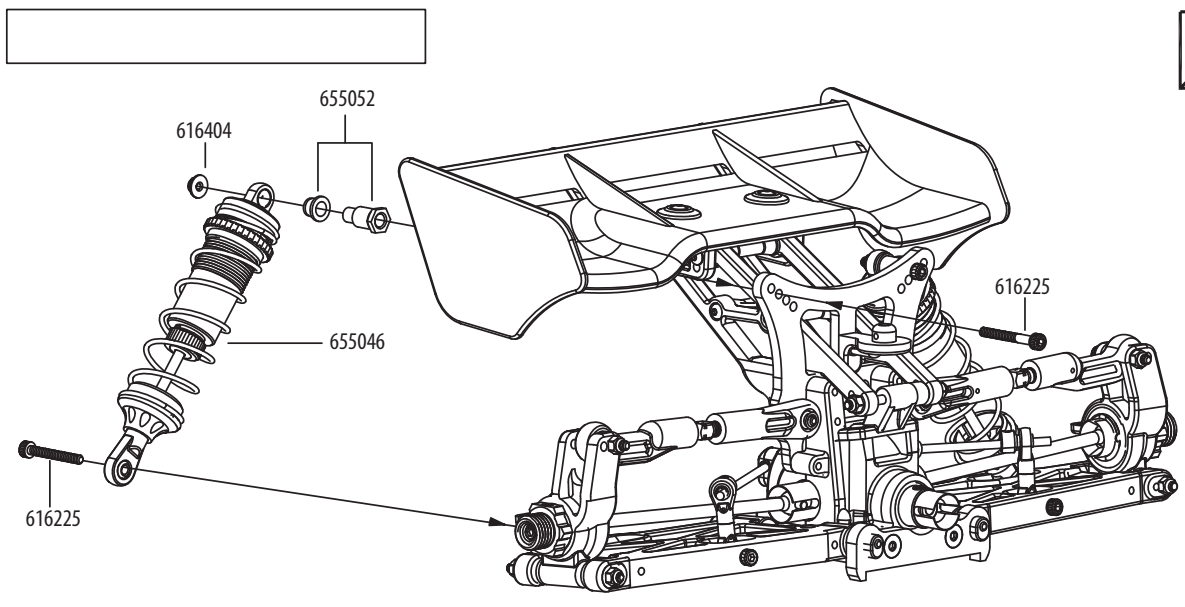
Aufbauabbildungen Firestorm Chassis


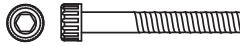



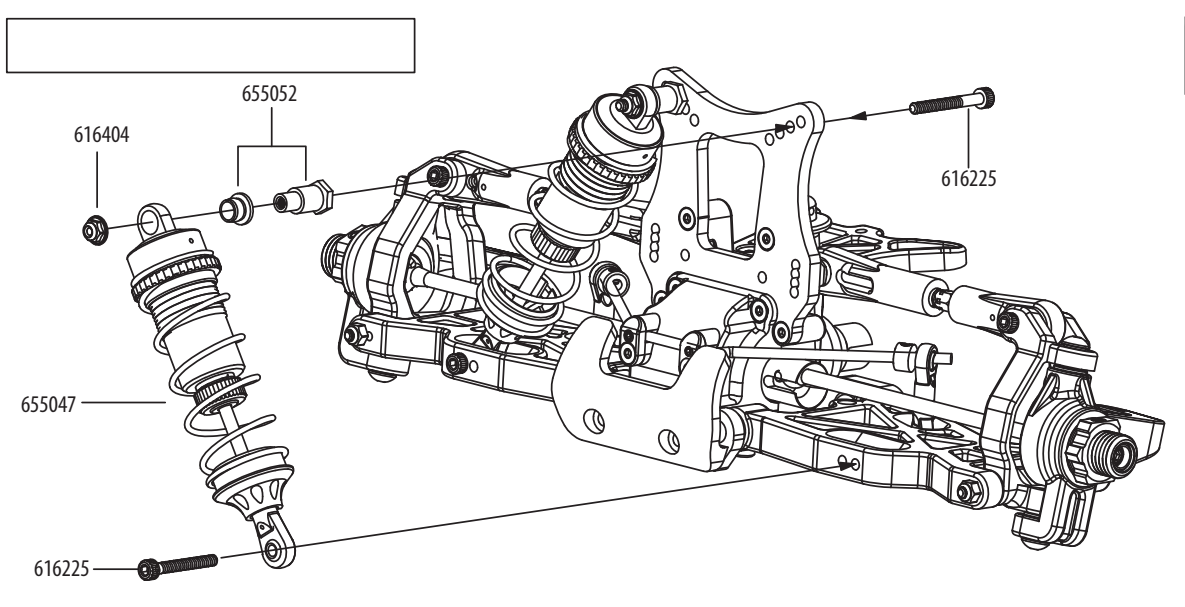



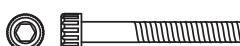

 × 6
 655076
 3×8
 FH Hex Screw





-  × 2
 616225
 3×24
 Cap Screw
-  × 2
 616225
 3×26
 Cap Screw
-  × 2
 616404
 TM3 Lock Nut

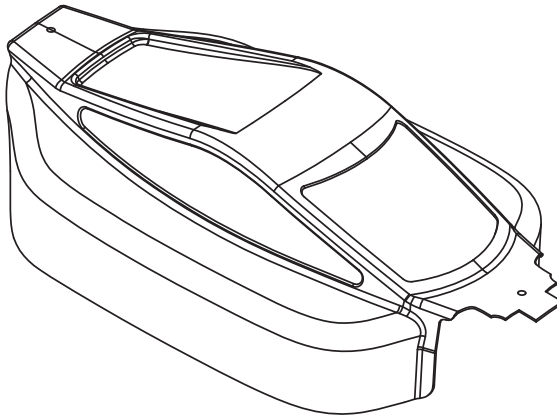


-  × 2
 616225
 3×24
 Cap Screw
-  × 2
 616225
 3×26
 Cap Screw
-  × 2
 616404
 TM3 Lock Nut



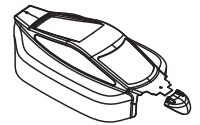
655098

650896



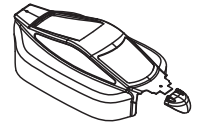
655098

650896

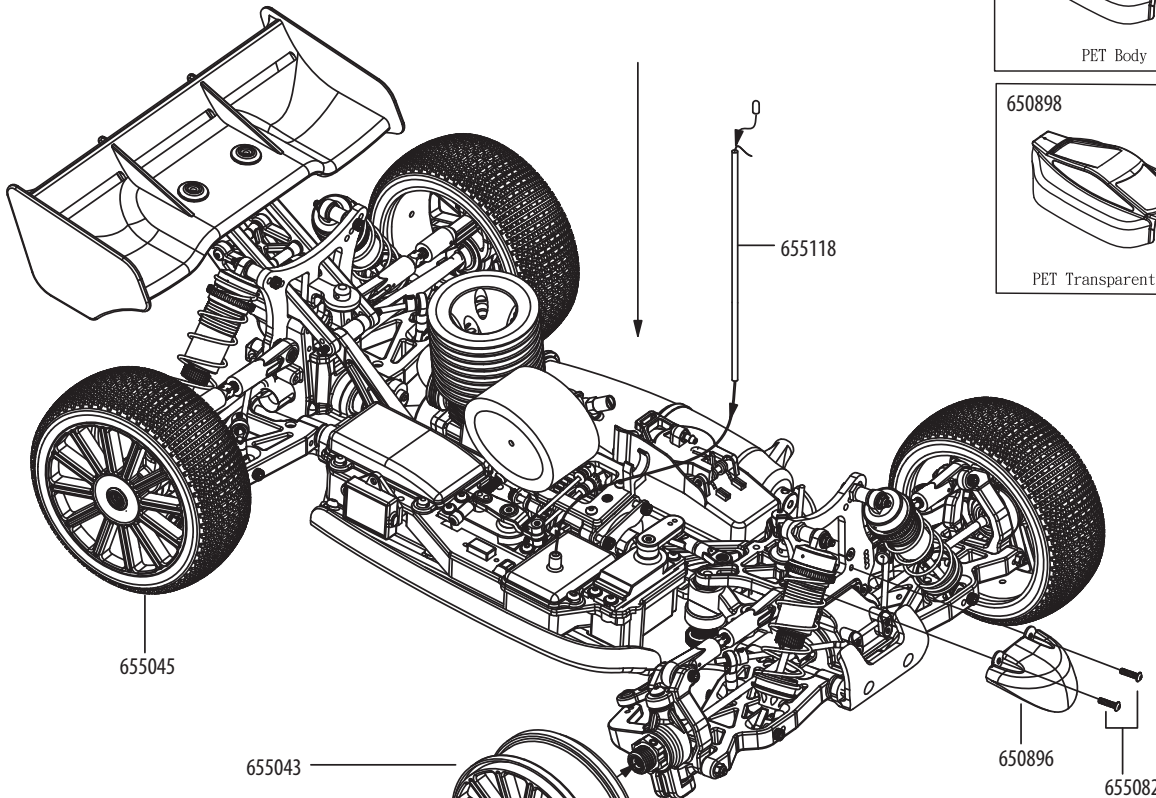


PET Body

650898



PET Transparent Body



655118

655045

655043

650896

655082

655044



655082
3x12
BH Hex Screw

655044

655042

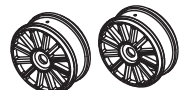
655043 BL

655043 W

655045 BL

655045 W

655044



Blak Rim White Rim

Wheel

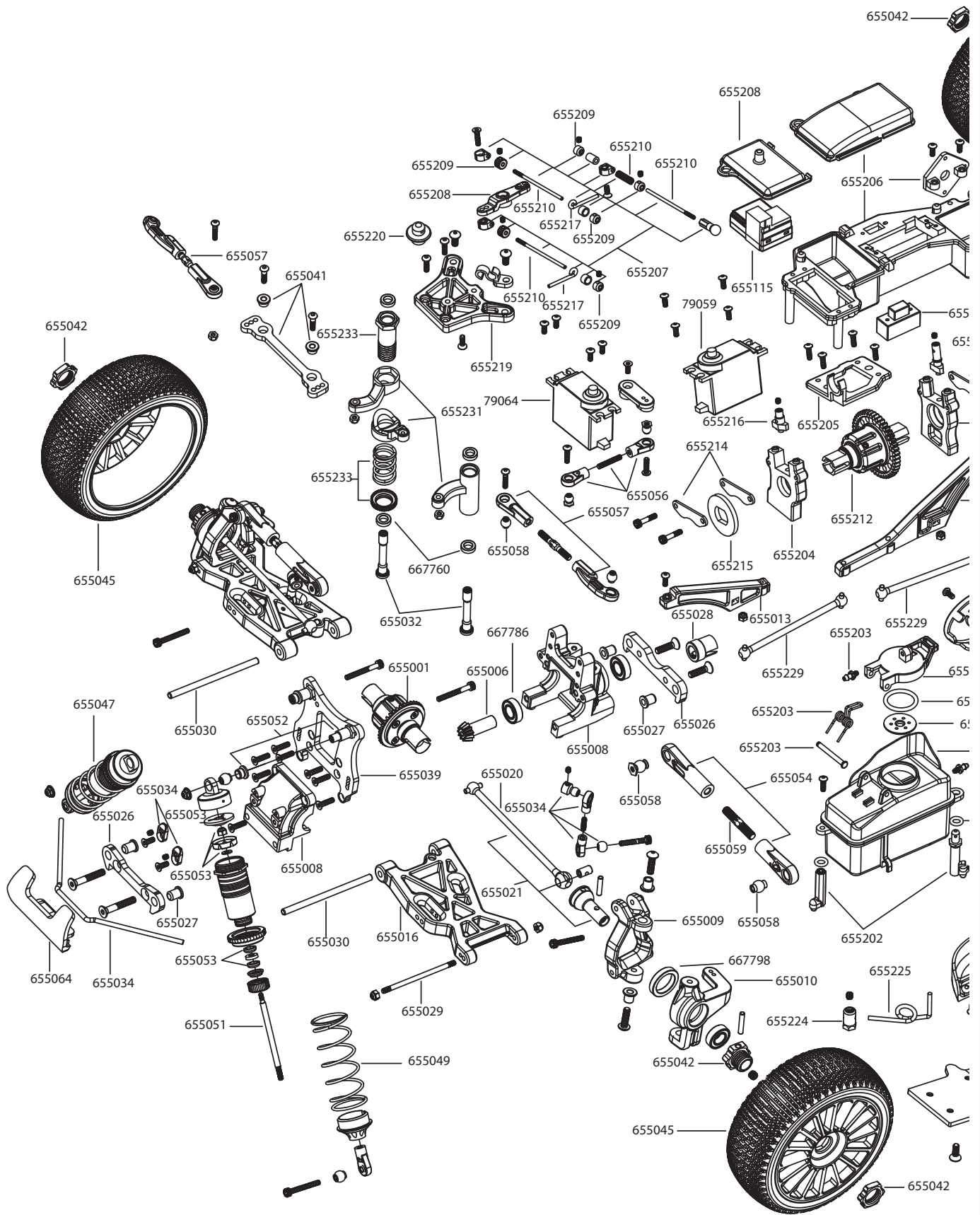


(White Rim & Tire Complete)

Tire



Tire with Fowm Insert





www.himoto-krick.de

Generalimporteur für Himoto Produkte

Krick Modelltechnik

Industriestrasse 1

75438 Knittlingen

Germany

E-Mail: info@krick-modell.de

Fax +49 (0)7043/31838